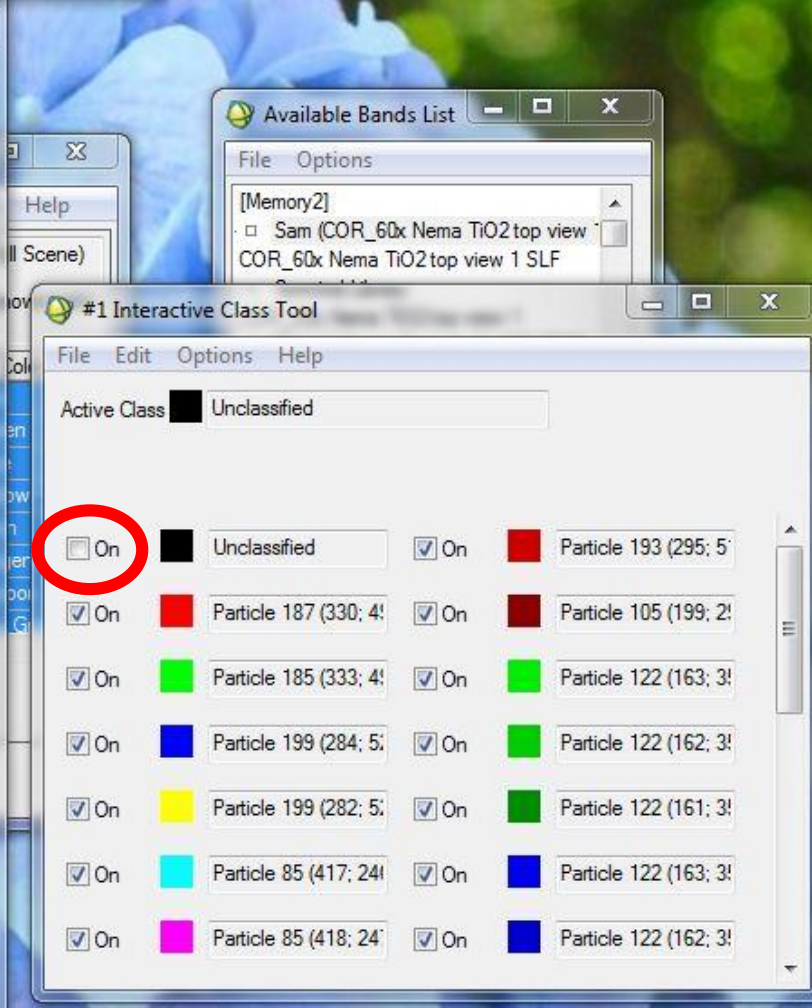
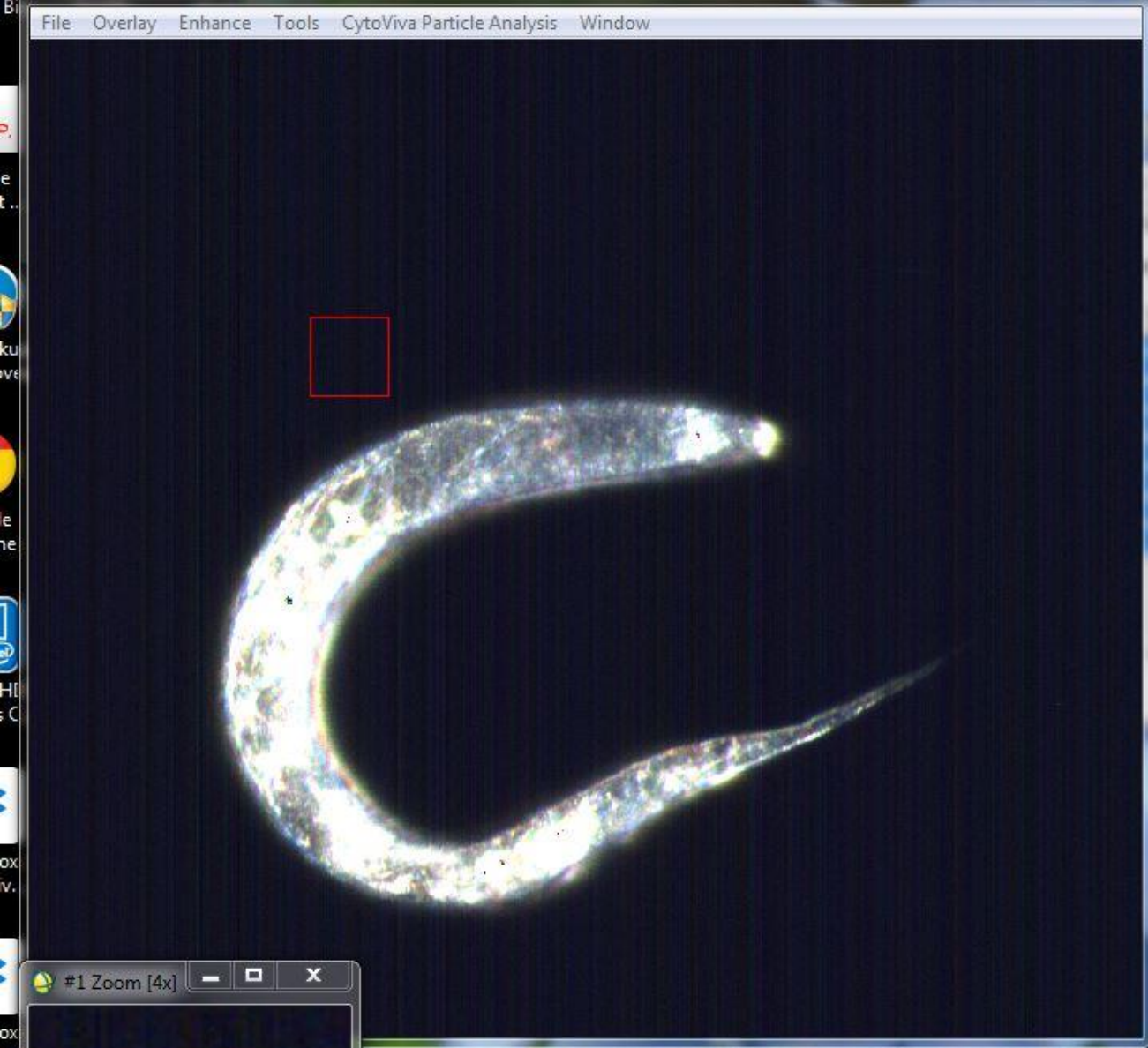


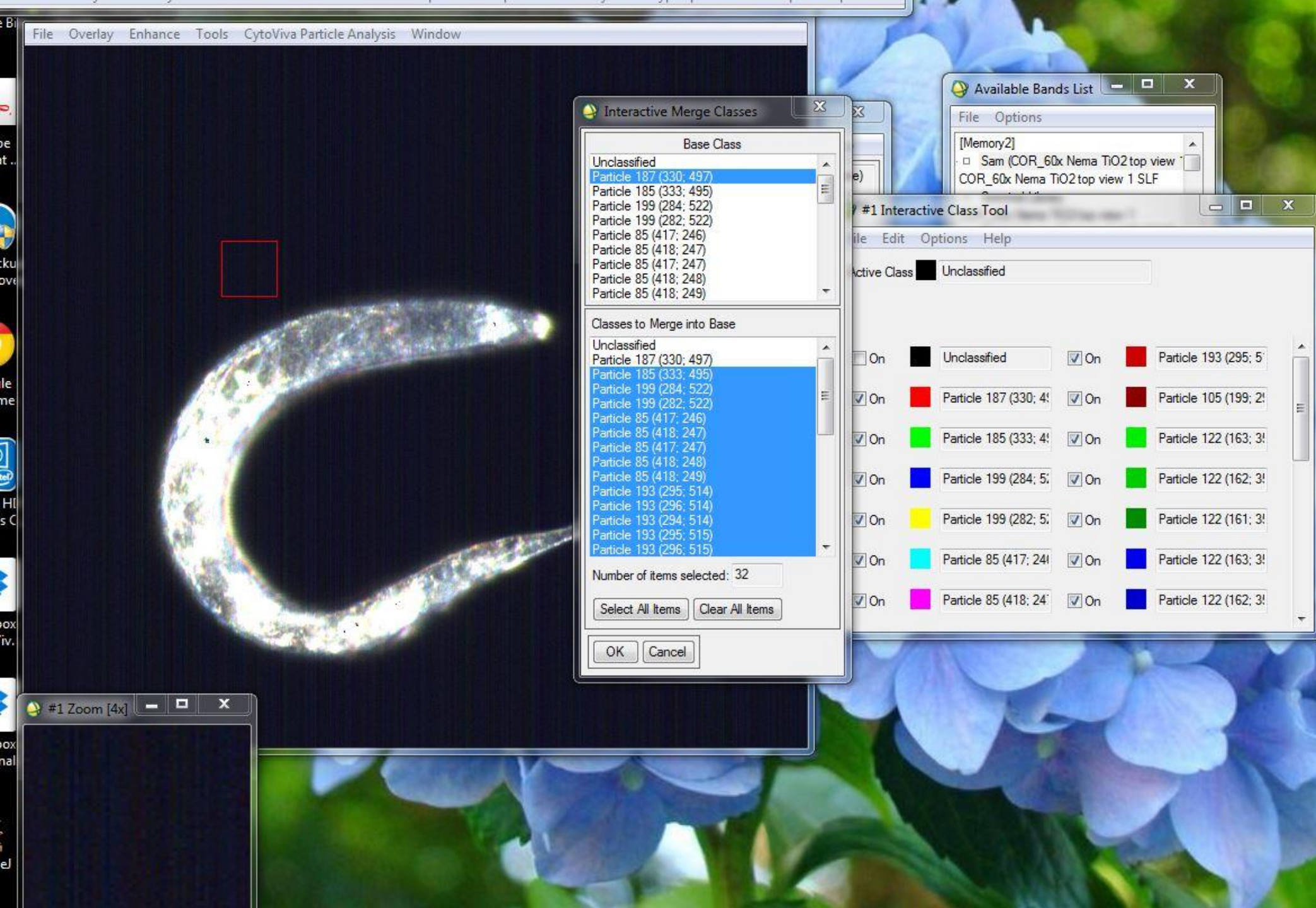
To activate the colors in the Interactive Class Tool window, right click the black box (see red arrow).

This blacks out the background and allows you to see just the mapping.



To view the mapping on top of the image, uncheck the "On" box next to the black box.



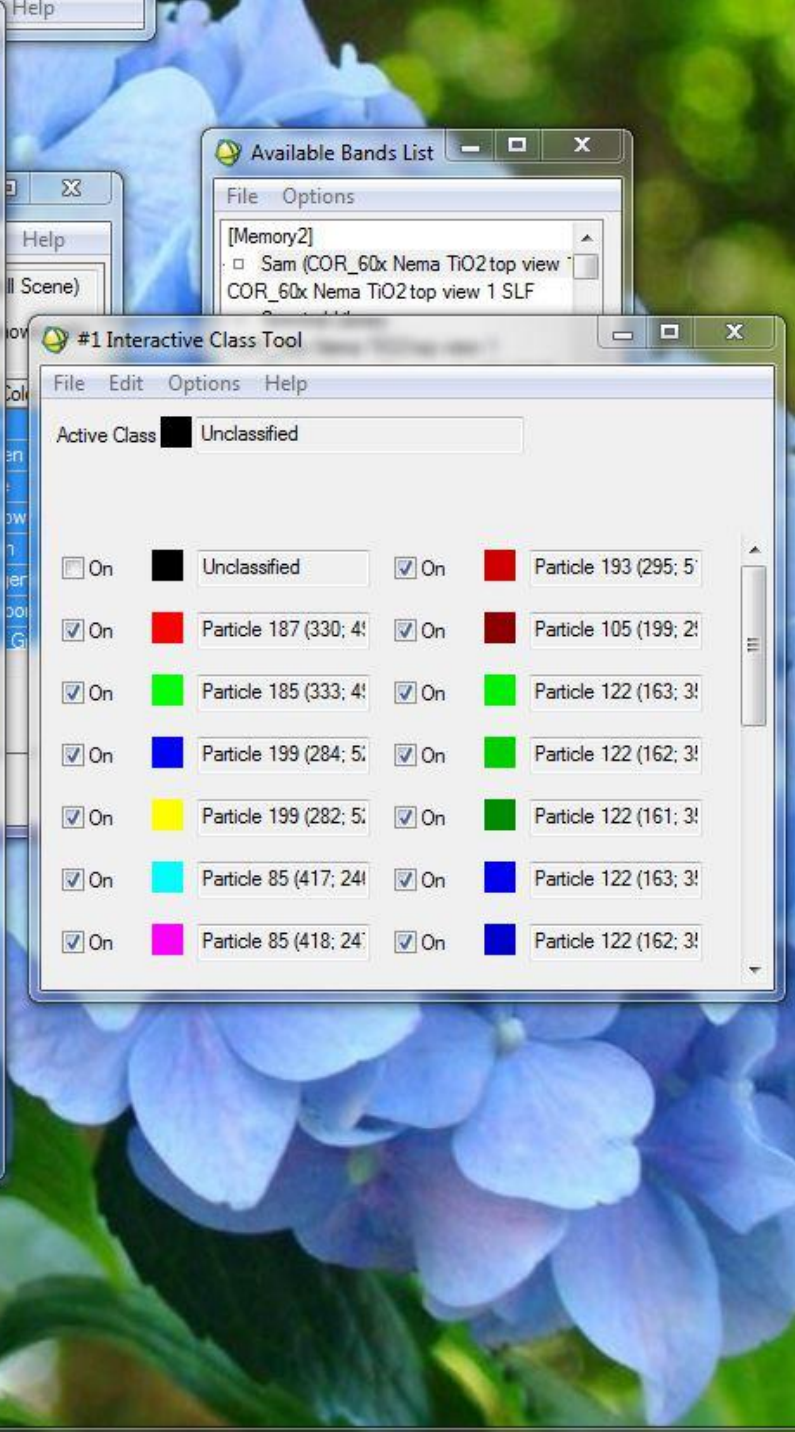
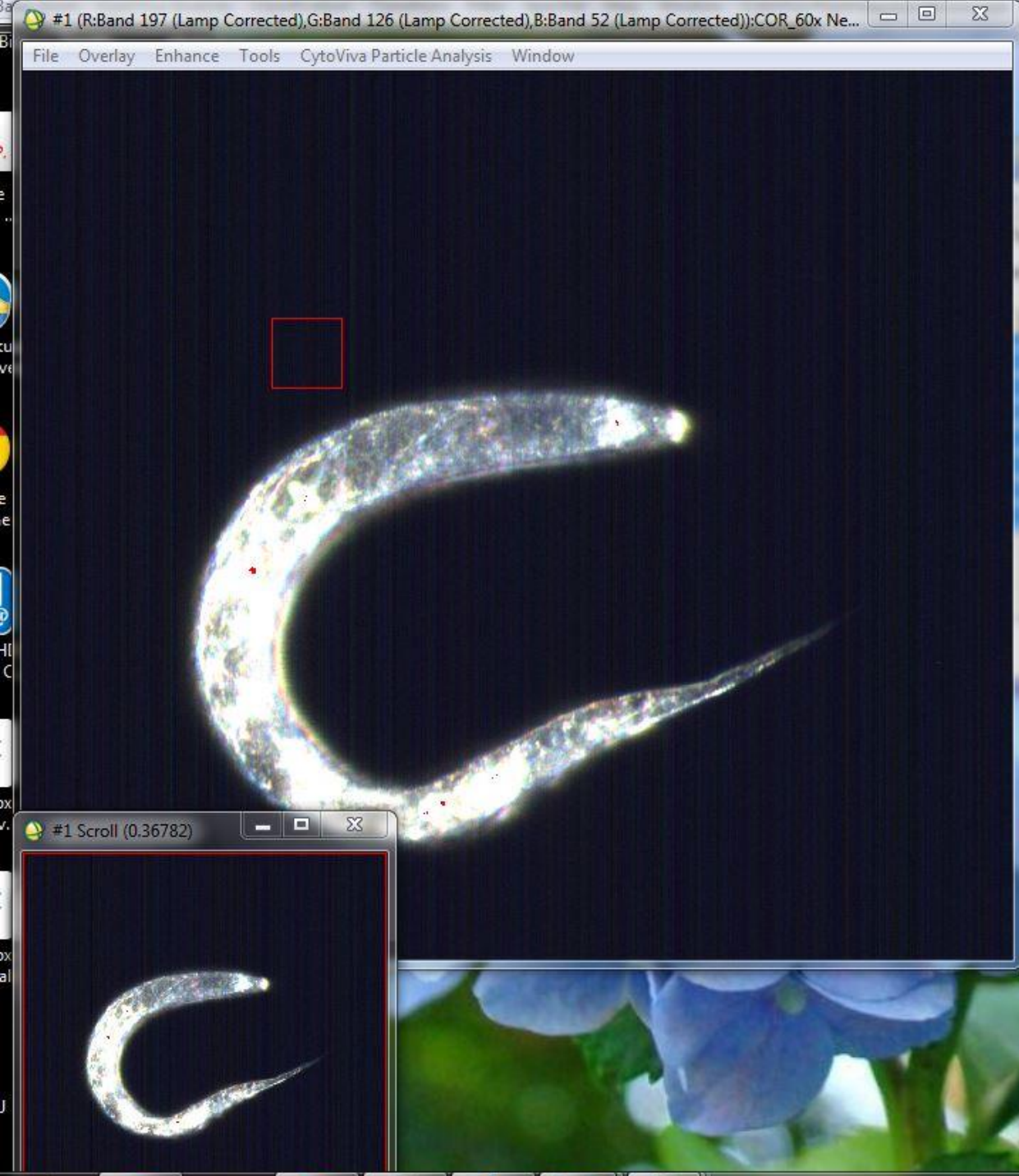


To make all the mapped pixels one color, go to Options → Merge Classes.

Under “Base Class,” highlight the first spectrum (NOT Unclassified).

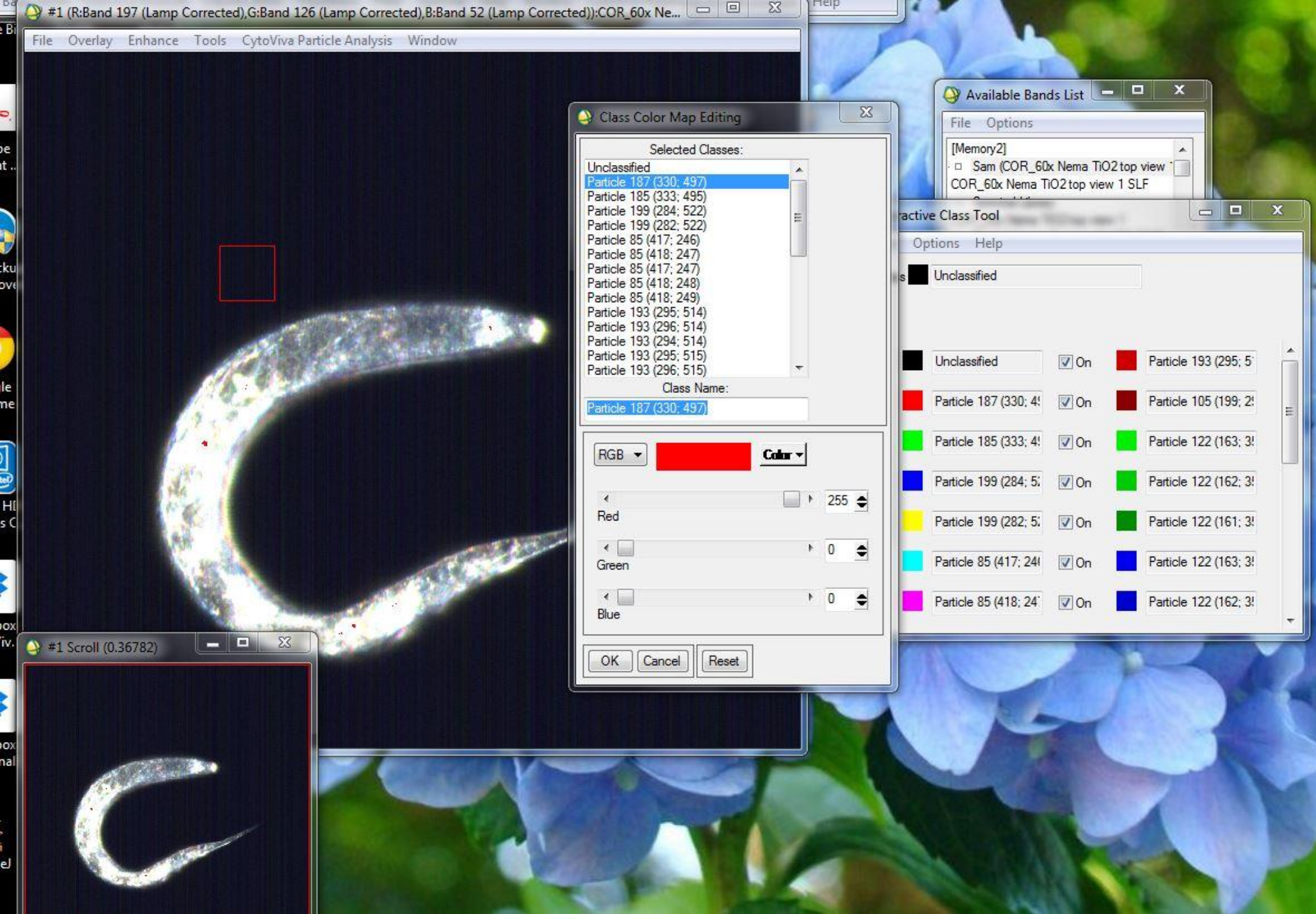
Under “Classes to Merge into Base,” highlight the rest of the spectra.





Now all the mapped pixels are one color (red).





To change the color of the mapped pixels, go to Options → Edit class colors/names.

Highlight the first spectrum (your Base Class) and choose the color you want from the dropdown "Color" menu.